

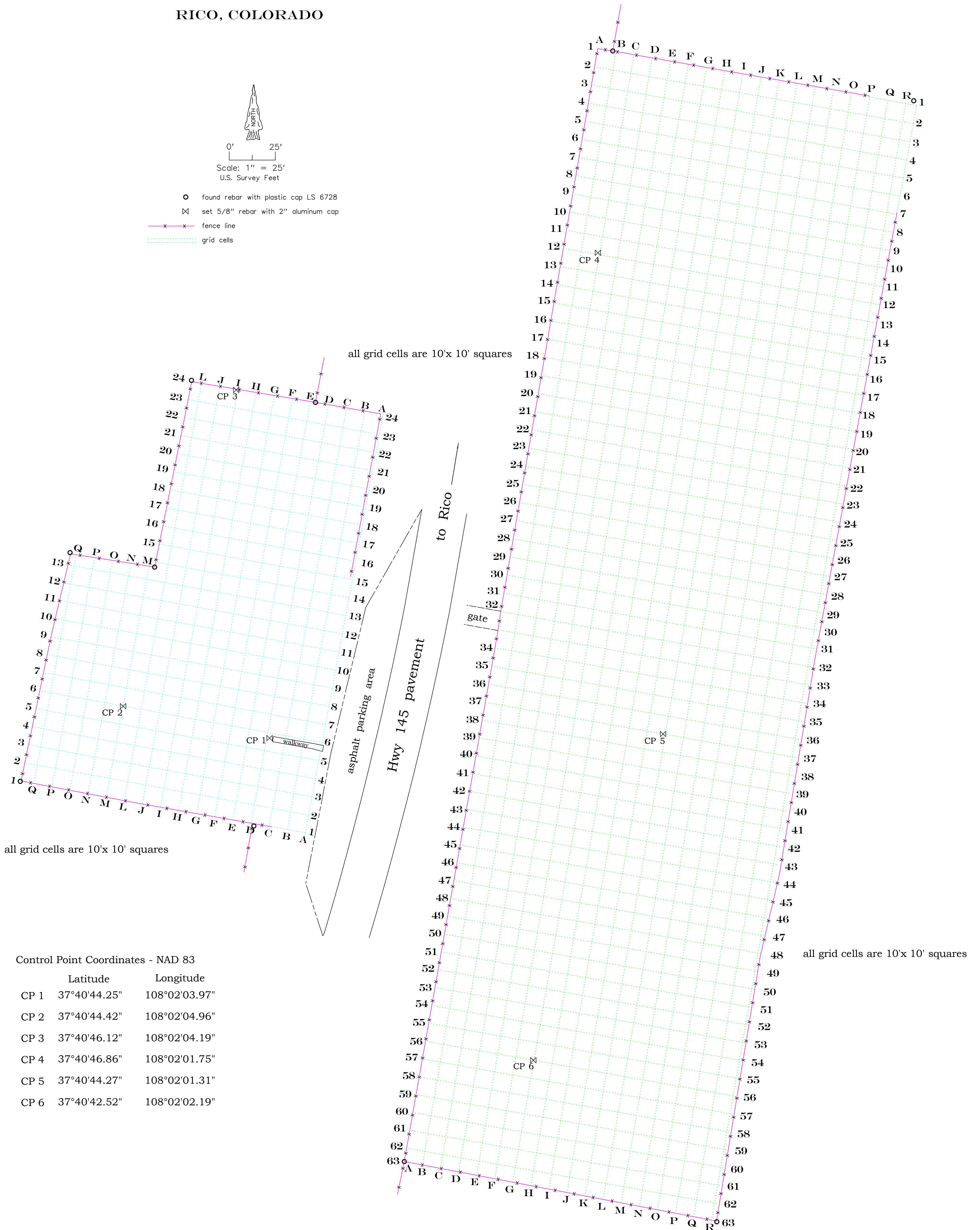
VALLEY RICO CEMETERY

RICO, COLORADO



0' 25'
Scale: 1" = 25'
U.S. Survey Feet

- found rebar with plastic cap LS 6728
- ⊠ set 5/8" rebar with 2" aluminum cap
- x—x— fence line
- ⋯ grid cells



Control Point Coordinates - NAD 83

	Latitude	Longitude
CP 1	37°40'44.25"	108°02'03.97"
CP 2	37°40'44.42"	108°02'04.96"
CP 3	37°40'46.12"	108°02'04.19"
CP 4	37°40'46.86"	108°02'01.75"
CP 5	37°40'44.27"	108°02'01.31"
CP 6	37°40'42.52"	108°02'02.19"